

4. 縮短手術時間，當天恢復

使用事先製作的Provisinal Bridge能夠減少診療時間，病患手術當天完成修復

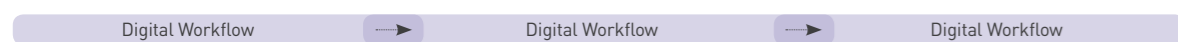


5. 預後良好的Screw-Retained Type

Screw-Retained Type的優點：
清潔、維修方便且預後良好



6. 全程數位化提供患者舒適的療程完成全口重建



Temporary Denture

按照病患的口腔狀態製作適合的DIO臨時假牙



Provisional Bridge

將病患的真實口腔狀態資料數位化並客製Provisional Bridge



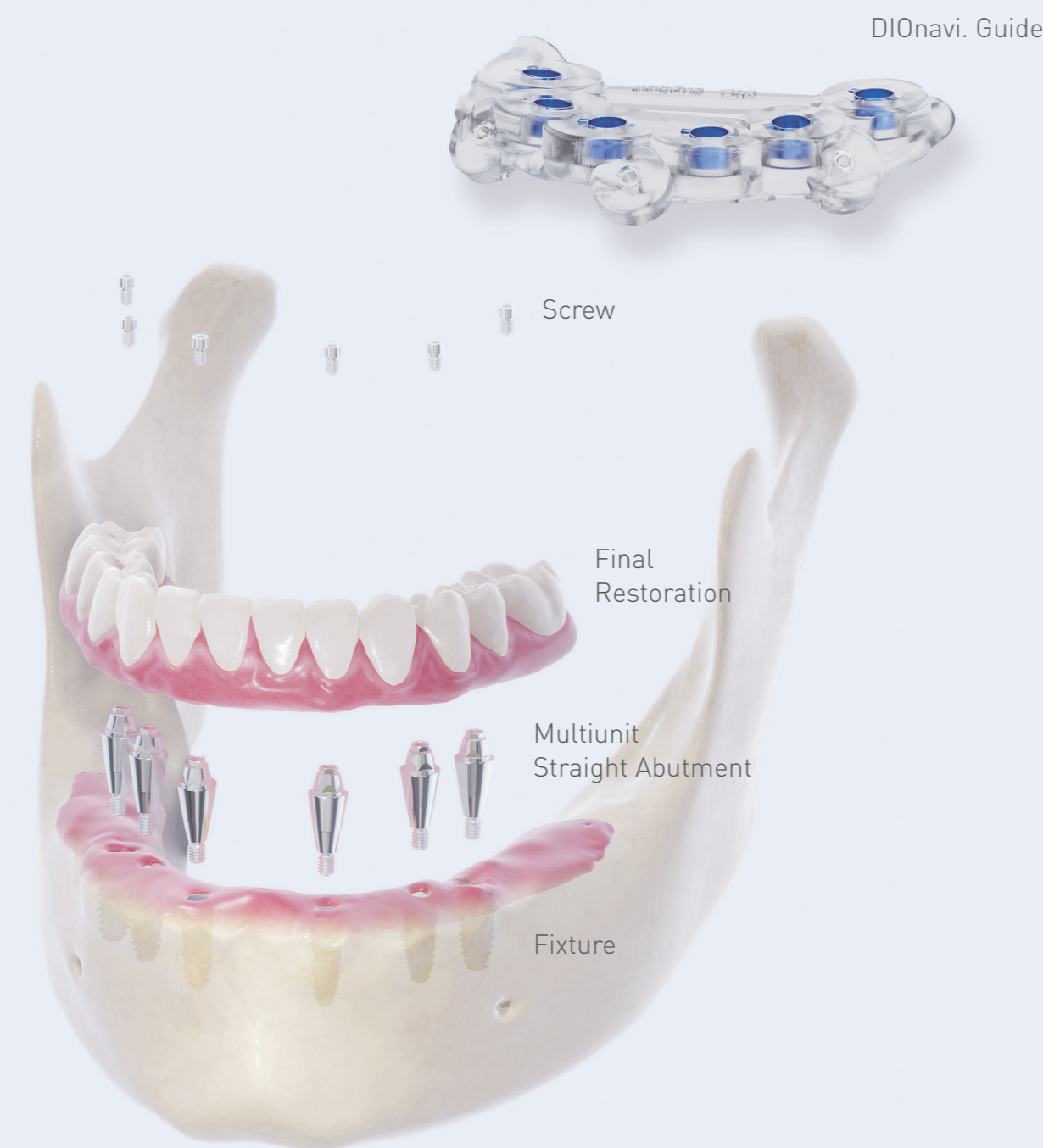
Final Restoration

數位化的DIOnavi. Full Arch手術能夠製作出病患最舒適的Final Restoration

什麼是數位化流程？

- 一般手術沒辦法把病患配戴臨時假牙期間的口腔狀態數位化建檔，無法準確製作 Provisional Bridge
- 病患戴 Provisional Bridge期間也能夠再次確認此修復物是否密合舒適

DIOnavi. Full Arch_Brochure_TW_2103
僅供醫療專業人員使用，不得做公眾傳播之用。



DIO IMPLANT
www.dioimplant.com

DIO Full Arch **navi.**
Full of Teeth, Full of Life.



使用DIOnavi.精確的數位手術導板，搭配DIOnavi. Full Arch專用的修復物，全數位化流程在最舒適狀態下完成全口重建，減少一般手術複雜的過程，提供醫師及病患更加優質的治療方式。

DIOnavi. Full Arch 的優點是什麼？

1. 高精準度和穩定度的DIOnavi.系統

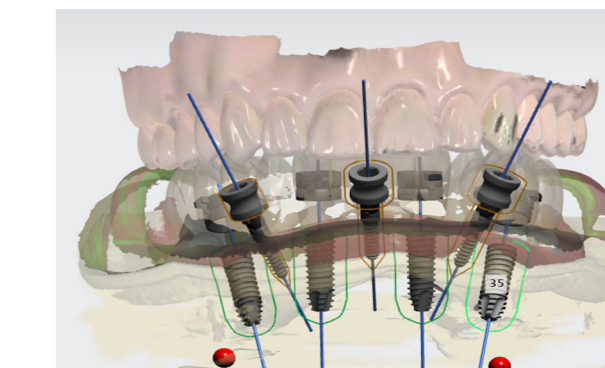
-減少傳統手術方式的不便和誤差



-從印模至列印導板全程是數位化
-全口無牙病患植入植體誤差平均 2.7°



2. 全程數位化提高精準度

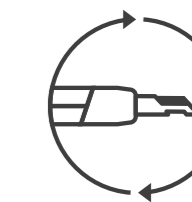


-使用CBCT、口掃機取得正確又精密的數位檔案減少誤差

3. 隨時都可以輕鬆製作

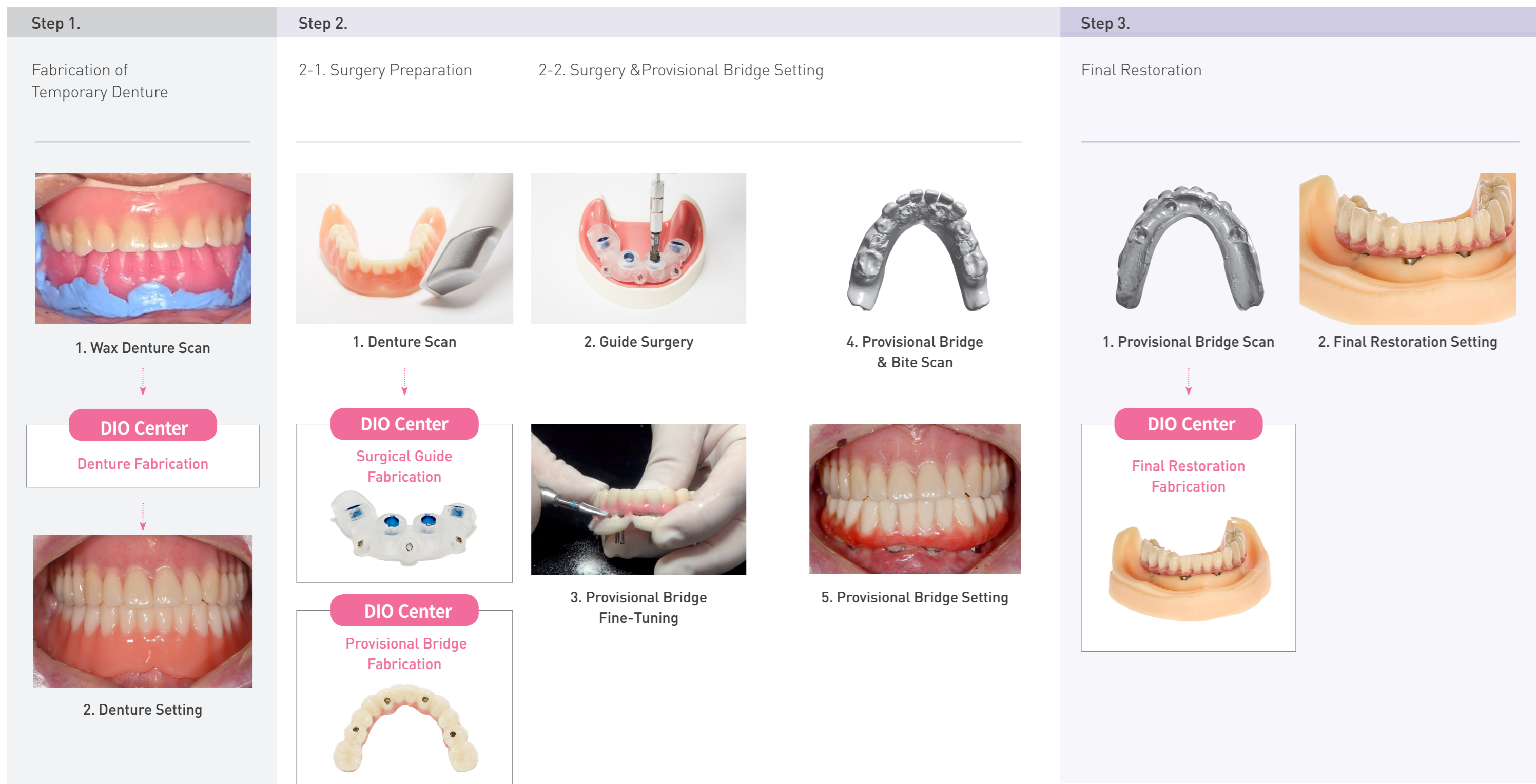


存載病患的所有的掃描和修復物相關資料紀錄



使用數位檔案病患不需再次回診取得口腔數據即可製作修復物

DIOnavi. Full Arch 流程



DIONavi. Full Arch 品項



Wax Denture用於取得全口無牙病患口內牙齦狀況和咬合關係。

Temporary Denture是利用DIO PROBO 3D列印的臨時假牙。DIONavi. Full Arch手術前讓病患適應牙齒功能，穩定咬合高度。

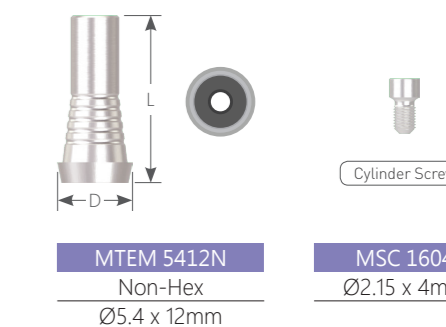


手術後立即安裝的修復物，讓病患最短時間內恢復牙齒的功能和外觀。

病患配戴Provisional Bridge後調整最佳咬合關係，並根據病人的口腔情況選擇最適合的材質客製最終正式假牙。

Temporary Cylinder

- Abutment level use in case of making temporary
- Uses 1.2 Hex Driver
- Packing Unit : Temporary Cylinder + Screw(MSC 1604)
- Tightening Torque : 20Ncm



Multiunit Straight Abutment

- Use it to fabricate a screw-retained prosthesis in a bridge case with different path
- Recommended Torque : 30Ncm
- Packing Unit : Multiunit Straight Abutment + Holder(MSAH 4820)
- Driver : HD 2012A

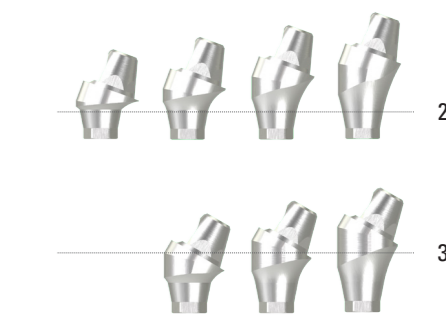
Cuff	Code
1.5mm	MSA 4801
2.5mm	MSA 4802
3.5mm	MSA 4803
4.5mm	MSA 4804



Multiunit Angled Abutment

- Use it to fabricate a screw-retained prosthesis in a bridge case with different path
- Multiunit Angled Abutment and Fixture(UFH Regular/Wide)are fastened with the Multiunit Angled Abutment Screw (MASC 2006)
- Multiunit Angled Abutment compensate Maximum 60° (2支植體為基準)
- Recommended Torque : 30Ncm
- Packing Unit : Multiunit Angled Abutment + Screw + Holder(MAH 1629)
- Driver : MHD 1215A(Ratchet用), MMD 1224(Machine用)

Cuff	Angle	
	20°	30°
2.5	MAA 482520H	MAA 483530H
3.5	MAA 483520H	MAA 484530H
4.5	MAA 484520H	MAA 485530H
5.5	MAA 485520H	MAA 485530H
Screw	MASC 2006	



Conical Abutment Screw Driver



Screw Driver (Ratchet)



Screw Driver (Machine)

